



SAVE ENERGY "0" LEAK VALVE

# HP VALVES PVT. LTD.

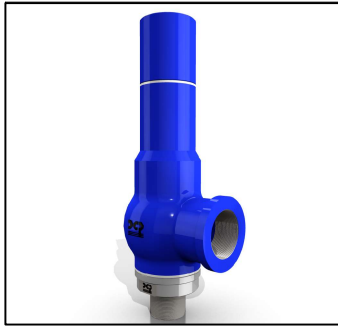
ADD: S-2, Abhishek Industrial Estate, Haripura, Asarwa, Ahemdabad-16  
GUJRAT INDIA Ph.: +91 - 9925047484

E-mail : [hpvalves@gmail.com](mailto:hpvalves@gmail.com), [hpvalve@hpvalve.net](mailto:hpvalve@hpvalve.net)

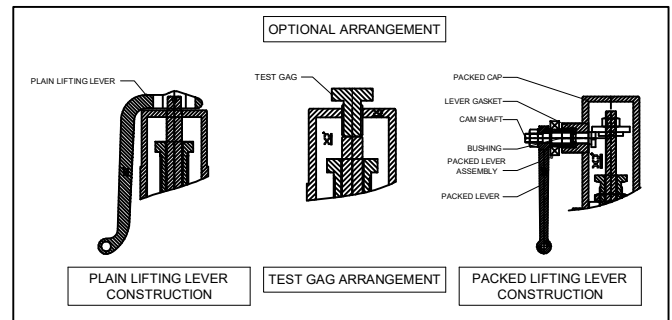
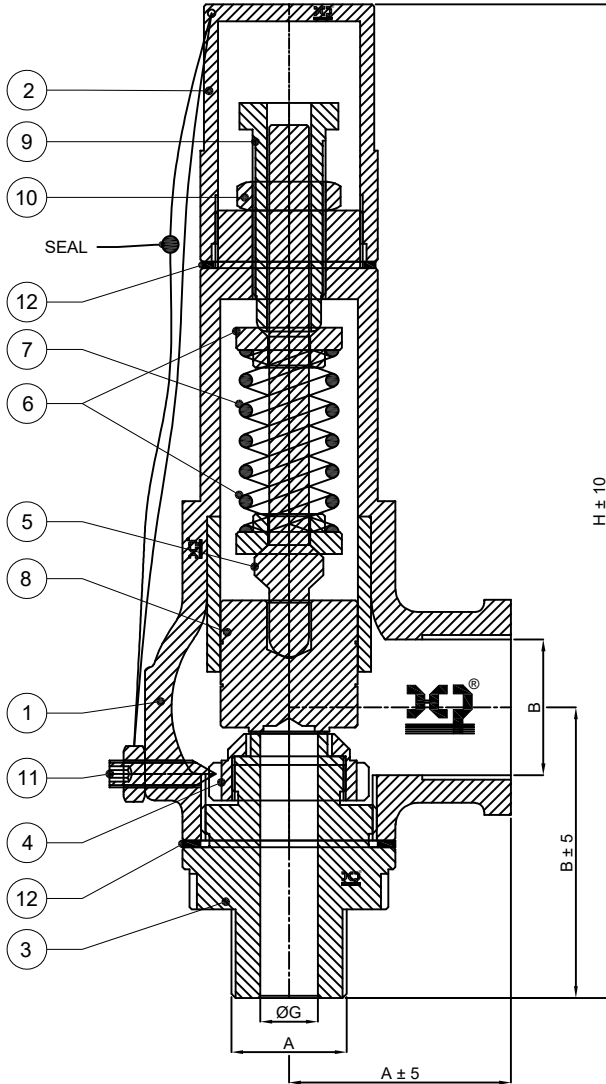
Web: [www.hpvalve.net](http://www.hpvalve.net), [www.hpvalve.in](http://www.hpvalve.in)



SAVE ENERGY "0" LEAK VALVE



DATA SHEET / DIMENSION TABLE		
INLET - SCREWED (MALE)	ORIFICE	OUTLET - SCREWED (FEMALE)
1/2"	D & E	3/4"
3/4"	D & E	1"
1"	E & G	1"
1"	E & G	1.1/2"
1"	E & G	2"
1.1/2"	F, G & H	1.1/2"
1.1/2"	F, G & H	2"
2"	H	2"



BILL OF MATERIAL	
SR. NO.	PART NAME
1	BODY
2	CAP
3	NOZZLE
4	POPPING RING
5	SPINDLE
6	SPRING WASHER
7	SPRING
8	PISTON
9	SETTING SCREW
10	SETTING SCREW NUT
11	RING LOCKING SCREW WITH NUT
12	JOINTING GASKET

FLANGE DIMENSIONS ARE IN "MM"				
SIZE	ØP	A	B	H
15 x 20	D,E	50	66	215
20 x 25	D,E	50	66	215
25 x 25	E & G	50	66	215
25 x 40	E & G	98	98	313
25 x 50	E & G	98	98	313
40 x 40	F,G,H	98	98	313
40 x 50	G,H	67	98	276
50 x 50	H	67	98	276

**Technical Data**

- @ MANUFACTURING STD. : GENERALLY CONFORMING TO API 526 / PTC-25
- @ END CONNECTION : INLET CONNECTION SCREWED END MALE  
OUTLET CONNECTION SCREWED END FEMALE
- @ INSPECTION & TESTING STD. : GENERALLY CONFORMING TO API 527
- @ APPLICATION : GAS / STEAM / WATER / OIL / LIQUID
- @ BONNET CONSTRUCTION : CLOSE TYPE
- @ SPECIAL FEATURE : DIRECT SPRING OPERATED CONVENTIONAL DESIGN

AVAILABLE OPTIONS	
*MATERIAL	BODY : WCB, WC6, WC9, LCB, LCC, LC3, C5, C12, CF8, CF8M, CF3, CF3M, CF8C...
	TRIMS : 13%Cr, 304, 304L, 316, 316L, 321, 347, F-51, Monel...
* PLEASE REFER TABLE OF BILL OF TRIMS.	



## H.P. VALVES PVT. LTD.

WORKS : S-2, ABHISHEK INDUSTRIAL ESTATE, HARIPURA, ASARWA, AHEMDABAD-380016. GUJRAT, INDIA.

DRG. NO :

HPVPL/PSV/HP600/S-E/00/D

MODEL NO. : **HP600**